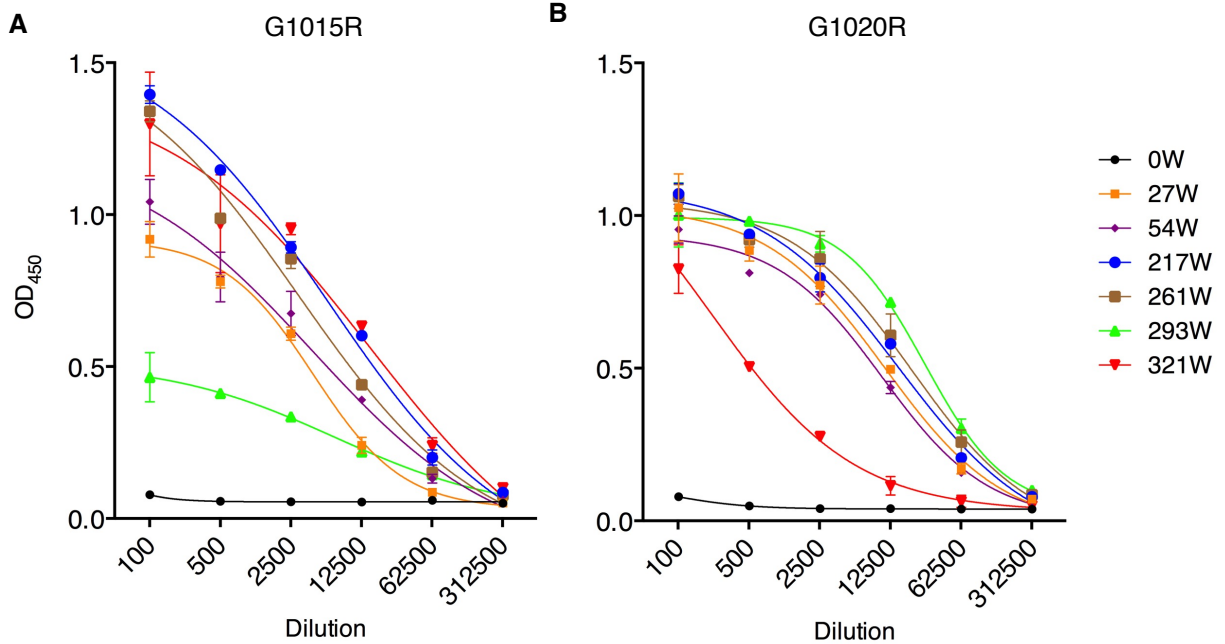


Supplementary Fig. 1



Supplementary Fig. 1. Binding of longitudinal plasma to SHIV_{1157ipd3N4} Env.

Purified gp120 of the challenging virus SHIV_{1157ipd3N4} from transfected 293T cells were used to coat 96-well plates. Each of 1:5 serial dilutions of longitudinal plasmas from G1015R (A) or G1020R (B) was added to a well in the plates. The binding of plasmas to gp120 was measured with the HRP-conjugated anti-monkey antibody.

Supplementary Fig. 2

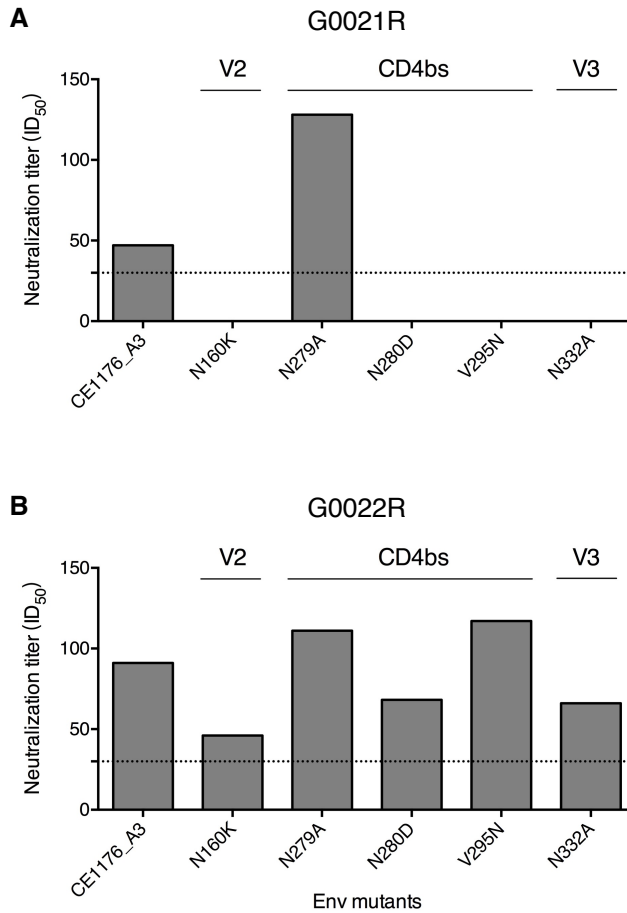
Virus	Animal	X1632	CH119	TRO11	246F3	398F1	CNE8	CNE55	CE0217	BJOX2000	CE1176	X2278	25710	SF162.LS	MLV
SHIV _{1157ipd3N4}	G1002V	<30	66	<30	<30	<30	<30	<30	<30	<30	<30	<30	<30	2557	<30
	G1003V	<30	<30	<30	<30	94	<30	<30	<30	32	<30	32	<30	1169	<30
	G1015R	170	<30	<30	<30	96	<30	<30	31	34	103	180	191	4634	<30
	G1020R	67	36	67	62	163	<30	<30	<30	83	69	109	126	845	<30
	G0021R	61	58	139	31	406	<30	<30	<30	44	47	353	136	2478	<30
	G0022R	70	46	68	52	110	<30	<30	<30	60	91	45	58	862	<30
SHIV _{CHN19P4}	#2-1	<30	<30	30	<30	41	<30	<30	<30	<30	<30	112	<30	268	<30
	#2-2	64	<30	<30	<30	44	<30	<30	<30	<30	<30	<30	68	3580	<30
	#2-3	<30	<30	<30	<30	<30	<30	<30	<30	<30	<30	<30	<30	<30	<30
	#5-1	<30	<30	<30	<30	<30	<30	<30	<30	<30	<30	<30	<30	<30	<30
SHIV _{SF162P3}	G0602V	<30	<30	33	<30	<30	<30	<30	<30	<30	<30	32	31	2625	<30
	G0603V	<30	<30	<30	<30	60	<30	<30	<30	<30	<30	<30	<30	453	<30
	G0604V	<30	<30	<30	<30	<30	<30	<30	<30	<30	<30	<30	<30	<30	<30
	G0606V	38	<30	<30	<30	51	<30	<30	<30	<30	<30	<30	67	1429	<30
	G0607R	<30	<30	<30	<30	<30	<30	<30	<30	<30	<30	<30	<30	<30	<30

 30-90
 91-270
 271-810
 > 810

Supplementary Fig. 2. Neutralization breadth of plasmas from macaques infected with different SHIV strains.

Neutralization titers (ID₅₀) of plasma samples from six SHIV_{1157ipd3N4}-infected macaques, four SHIV_{SF162P3}-infected macaques and five SHIV_{CHN19P4}-infected macaques after six years of infection were determined with a global panel of 12 tier 2 viruses. The pseudovirus made with the envelope glycoprotein (SVA) from the murine leukemia virus was used as a non-specific neutralization control.

Supplementary Fig. 3



Supplementary Fig. 3. Neutralization specificities of plasmas from two SHIV_{1157ipd3N4}-infected macaques.

Neutralization activity of week 321 plasma from G0021R (A) and G0022R (B) were determined against the wild type Ce1176 and its mutants (N160K, N279A, N280D, V295N, and N332A). The dotted line indicates the lowest dilution (1:30) used for neutralization assay.