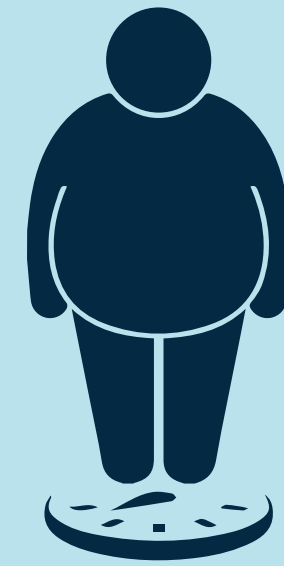


BMI Cutoff for Joint Replacement: Risk of Complication vs. Access to Care

Morbid obesity is a risk factor for complications following total joint replacement.



Therefore, some surgeons enforce BMI-based eligibility criteria for total joint replacement.

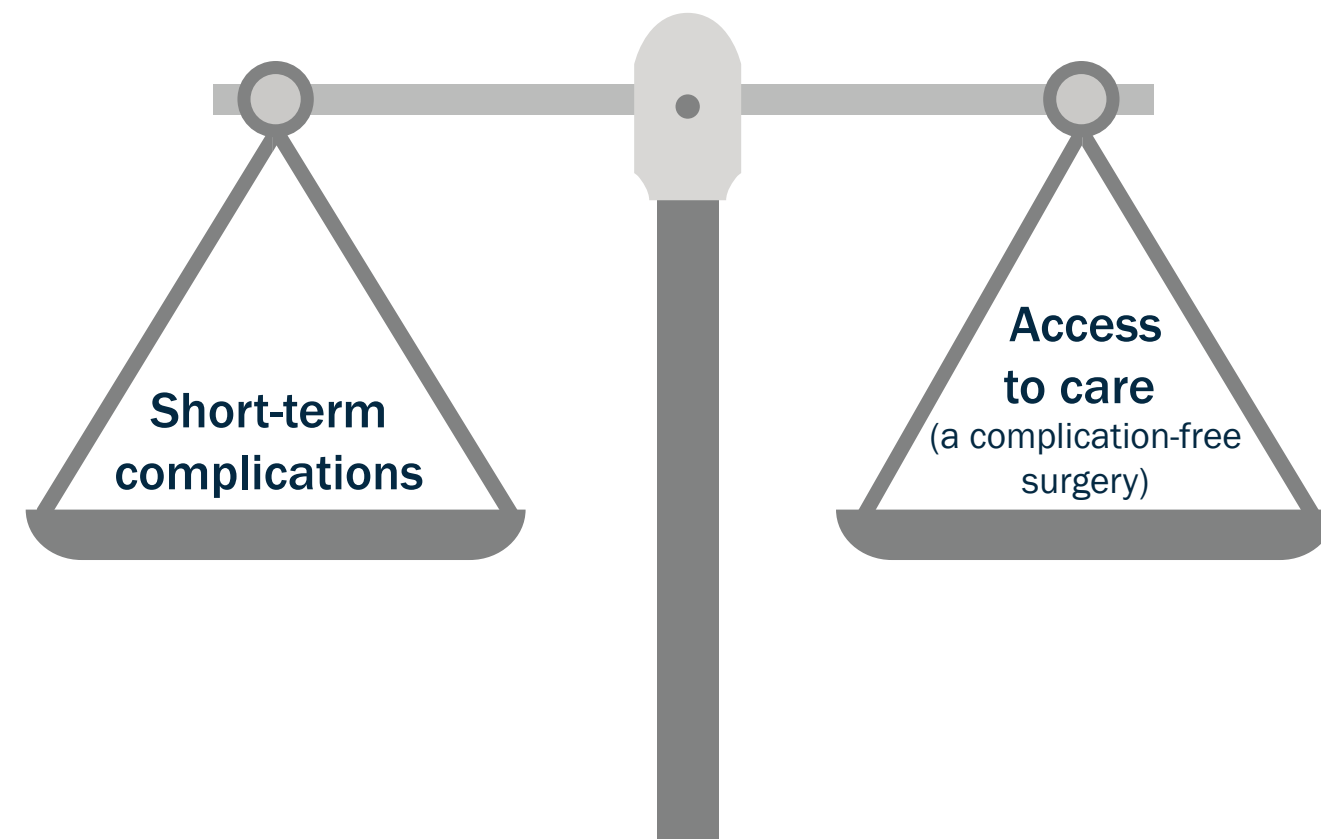


Retrospective review of 27,671 patients who underwent primary total joint replacement

(data set sourced from the Veterans Health Administration)



Would enforcing a BMI cutoff criterion help balance?



Postoperative Outcomes:

Major complications within 30 days

or

Death within 90 days

Surgical eligibility criteria	Number of patients denied complication-free surgery for every patient who did not have a complication	
50	4	
40	14	
30	18	
Randomized based on a coin flip	19	

BMI-based cutoff (kg/m²)

BMI-based eligibility criteria for total joint replacement may reduce complications but can come at the cost of excluding a large number of patients who would have had a complication-free surgery.

Risk Reduction Compared with Access to Care: Quantifying the Trade-Off of Enforcing a Body Mass Index Eligibility Criterion for Joint Replacement

Giori et al. (2018)

DOI: 10.2106/JBJS.17.00120

www.jbjs.org

theJBJS

@JBJS

