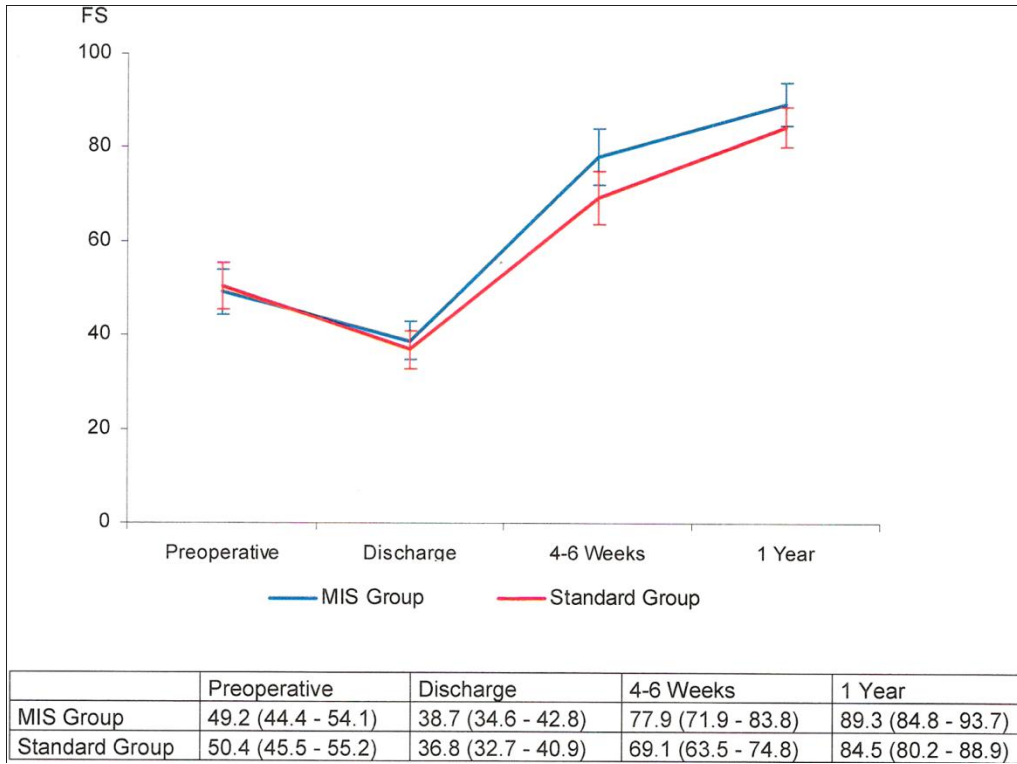
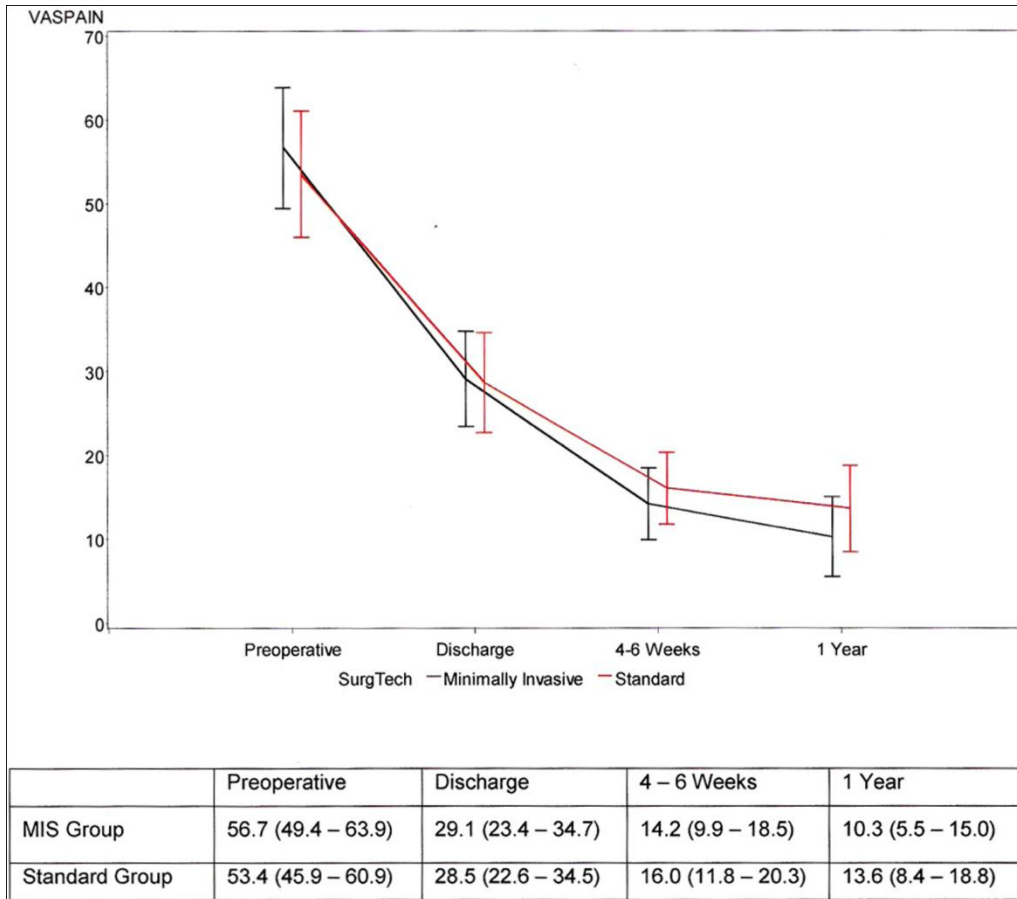


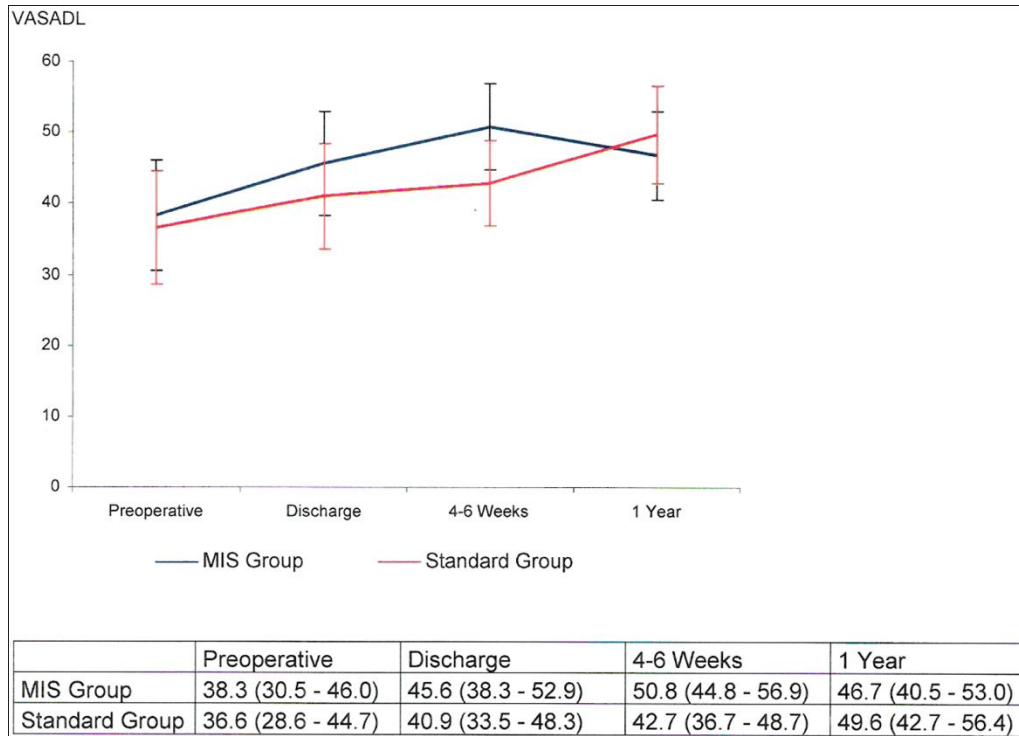
Fig. E-1  
 Mean Knee Society (KS) score and 95% confidence interval by surgical procedure preoperatively and at discharge, four to six weeks, and one year. MIS = minimally invasive surgery.



**Fig. E-2**  
 Mean total Knee Society function score (FS) and 95% confidence interval by surgical procedure preoperatively and at discharge, four to six weeks, and one year. MIS = minimally invasive surgery.



**Fig. E-3**  
 Mean visual analog scores (VAS) for pain and 95% confidence interval by surgical procedure preoperatively and at discharge, four to six weeks, and one year. For pain, a lower visual analog pain score indicates less pain. MIS = minimally invasive surgery.



**Fig. E-4**  
 Mean visual analog scores (VAS) for activities of daily living (ADL) and 95% confidence interval by surgical procedure preoperatively and at discharge, four to six weeks, and one year. For activities of daily living, a lower visual analog score indicates a poorer outcome. MIS = minimally invasive surgery.

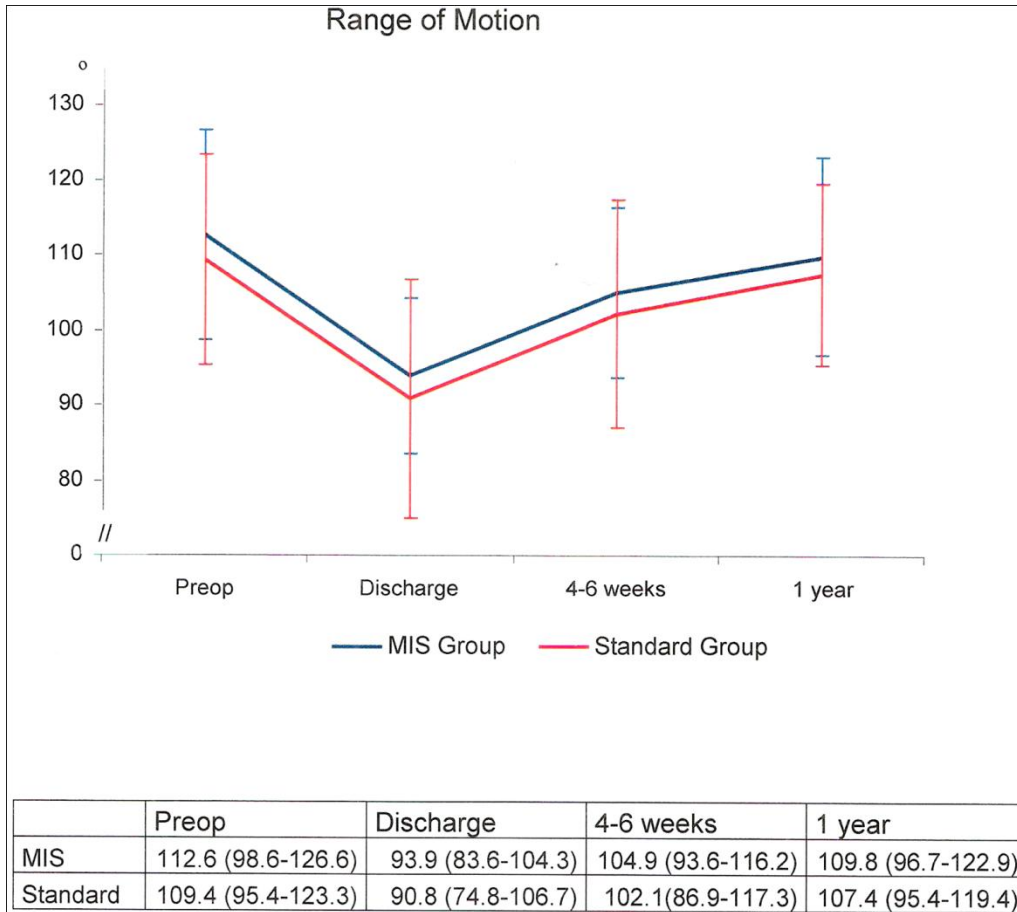


Fig. E-5  
 Mean range of motion and 95% confidence interval by surgical procedure preoperatively and at discharge, four to six weeks, and one year. MIS = minimally invasive surgery.