

Fig. E-1

CONSORT (Consolidated Standards of Reporting Trials) flow diagram.



Fig. E-2A



Fig. E-2B

Figs. E-2A and E-2B Postoperative radiographs of both knees of a seventy-two-year old woman with osteoarthritis who received a PFC Sigma CR-mobile-bearing prosthesis in each knee. **Fig. E-2A** Anteroposterior radiograph of both knees ten years after surgery (computer-navigated total knee arthroplasty in the right knee and conventional total knee arthroplasty in the left knee), demonstrating no radiolucent lines or osteolysis about the tibial component in either knee and no gross wear of the polyethylene insert. **Fig. E-2B** Lateral radiograph of both knees in the same patient, demonstrating no radiolucent lines or osteolysis about the femoral, tibial, and patellar components of either knee.

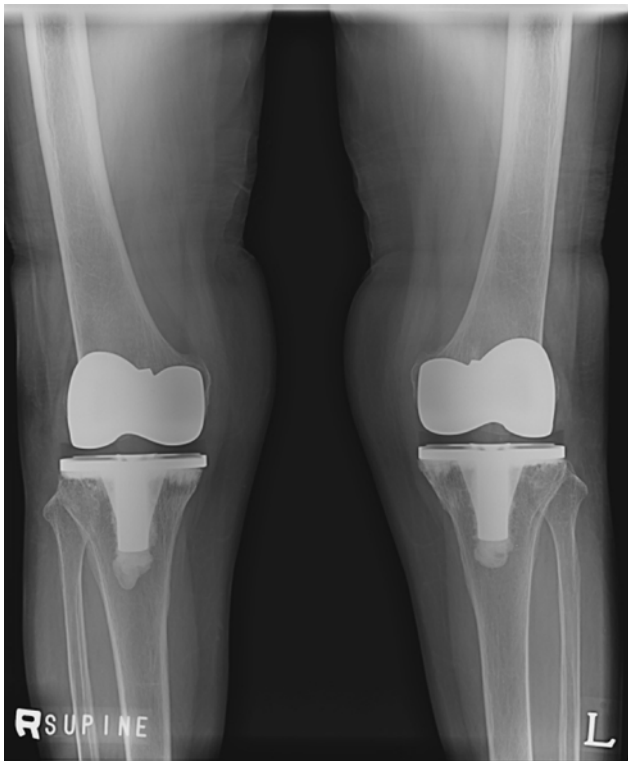


Fig. E-3A

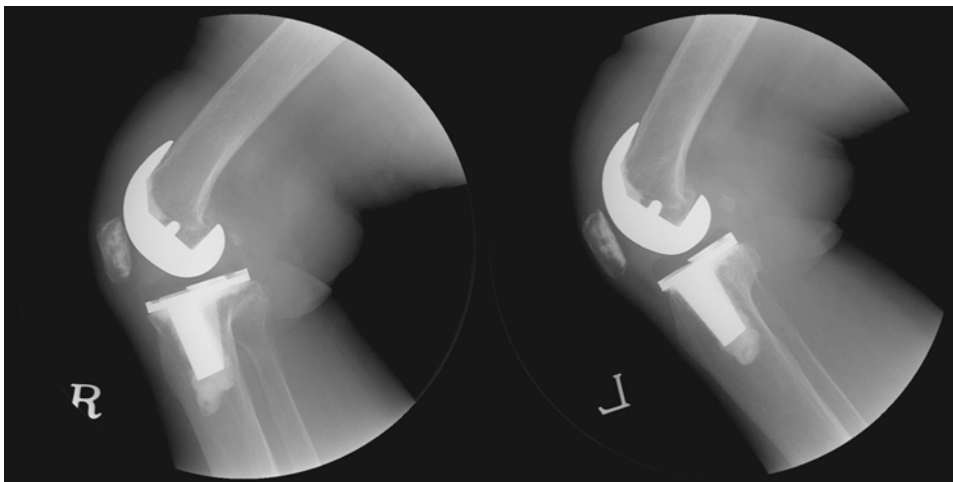


Fig. E-3B

Figs. E-3A and E-3B Postoperative radiographs of both knees of a seventy-year-old woman with osteoarthritis who received a NexGen LPS-Flex prosthesis in each knee. **Fig. E-3A** Anteroposterior radiograph of both knees ten years after surgery (computer-navigated total knee arthroplasty in the left knee and conventional total knee arthroplasty in the right knee), demonstrating that the NexGen LPS-Flex prostheses are both embedded in a satisfactory position. No radiolucent lines or osteolysis is demonstrated about the tibial component in either knee, and no gross wear of the polyethylene insert is shown in either knee. **Fig. E-3B** Lateral radiograph of both knees in the same patient, demonstrating no radiolucent lines or osteolysis about the femoral, tibial, and patellar components of either knee.