

Fig. E-1

Longitudinal section of a two-week specimen of a saline solution-injected medial collateral ligament (MCL) (**Fig. E-1A**) and a transverse section of a two-week specimen of a platelet-rich plasma (PRP)-injected MCL (**Fig. E-1B**). **Fig. E-1A** The saline solution-injected specimen shows normal anatomy (hematoxylin and eosin, $\times 40$). **Fig. E-1B** The platelet-rich plasma-injected MCL specimen has similar large and small collagen bundles but is surrounded by larger amounts of more cellular collagenous tissue with many small vascular spaces (arrow v) and fibrocartilage (arrow c) (hematoxylin and eosin; original magnification, $\times 40$). Von Kossa stains were negative.

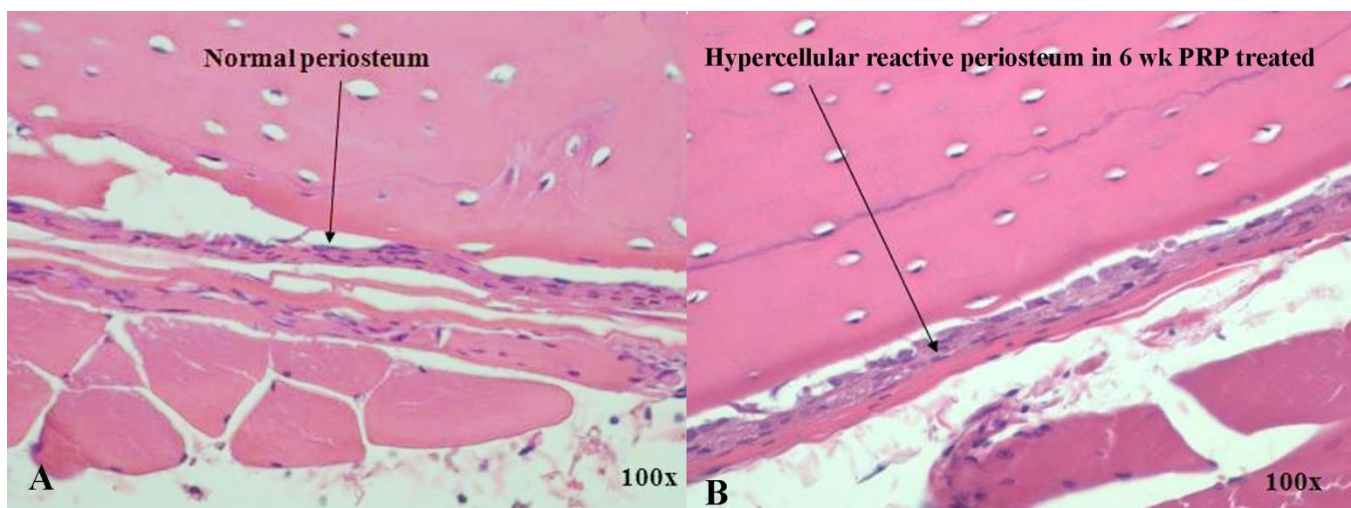


Fig. E-2

High-power views of normal periosteum in a control specimen (**Fig. E-2A**) and hypercellular periosteum in a platelet-rich plasma (PRP)-treated specimen at six weeks (**Fig. E-2B**) (hematoxylin and eosin; original magnification, $\times 100$).

TABLE E-1 Serum and Platelet-Rich Plasma (PRP) Platelet Counts

Rabbit No.	Serum Platelet Count	PRP Platelet Count	Platelet Increase (×)
10	234,000	1,732,000	7.4
11	114,000	663,000	5.8
12	175,000	1,889,000	10.8
13	236,000	944,000	4.0
14	166,000	1,366,000	8.2
15	211,000	1,498,000	7.1