

Fig. E-1
 Pooled results for return to work; results favoring operative intervention are plotted on the left. WMD = weighted mean difference, and CI = confidence interval.

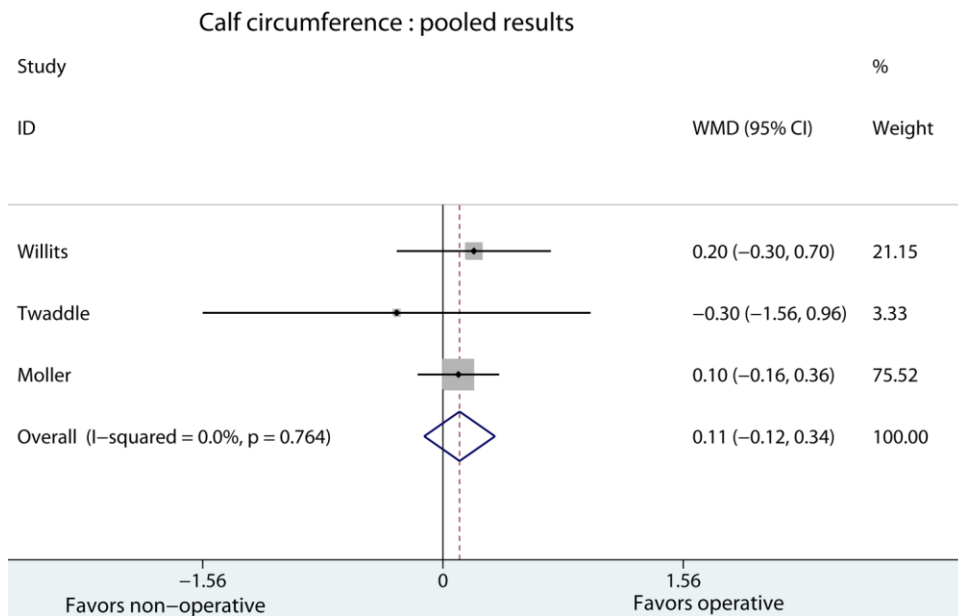


Fig. E-2
 Pooled results for calf circumference; results favoring operative intervention are plotted on the right. WMD = weighted mean difference, and CI = confidence interval.

Functional outcomes : pooled results

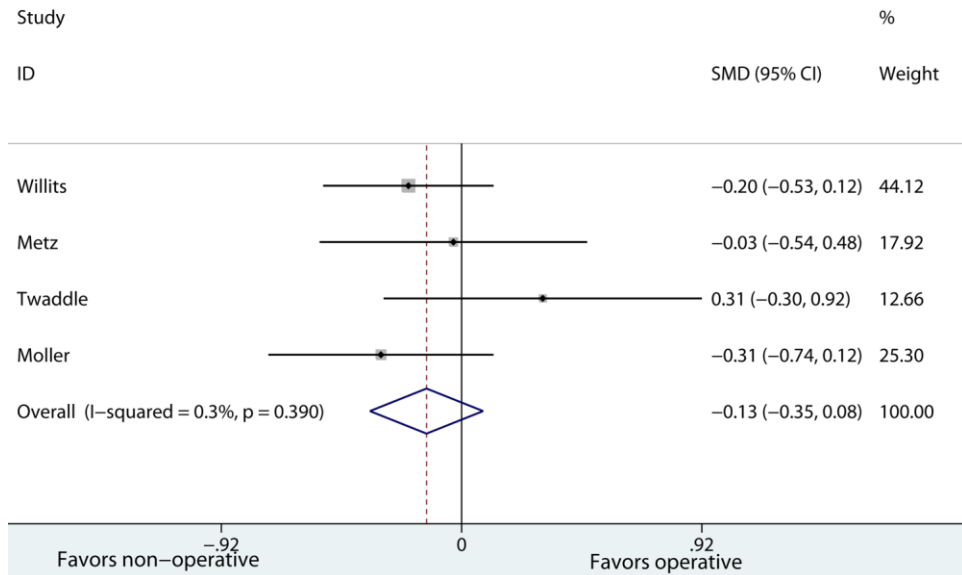


Fig. E-3

Pooled results for functional outcome; results favoring operative intervention are plotted on the right. SMD = standardized mean difference, and CI = confidence interval.

TABLE E-1 Patient Demographics

Study	Operative			Nonoperative		
	N	Age (yr)	Male (%)	N	Age (yr)	Male (%)
Metz	42	40	73.8	41	41	85.3
Willits	73	40.9	81.3	72	40.9	81.3
Twaddle	20	41.8	70	22	40.3	63.6
Möller	69	39	86	53	39	91
Majewski	29	—	80.8	14	—	80.8
Schroeder	13	43.9	—	15	37.7	—
Thermann	22	37	78	28	36	78
Cetti	56	37.2	83.9	55	37.8	81.8
Nistor	45	41	89.7	60	41	89.7
Nilsson-Helander	49	40.9	81.6	48	41.2	81.3
Total	418	39.84	81.6	408	39.8	82.7