

Fig. E-1

The postoperative coronal T2-weighted MRI scan showed a rotator cuff without a retear.

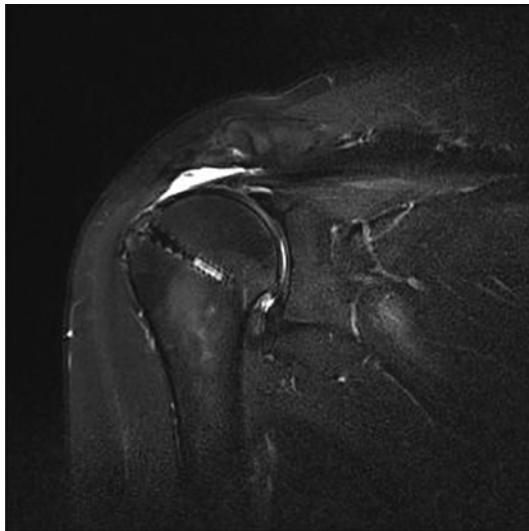


Fig. E-2

The postoperative coronal T2-weighted MRI scan showed a retear of the rotator cuff. The suture anchor was located deep within the humeral head.

TABLE E-1 Demographic and Surgical Data

Variables	Finding
No. of patients	24
Age at surgery (range) (<i>yr</i>)	59.6 (48-73)
Sex (M)	12
Affected shoulder (R)	15
Mean duration of symptoms (range) (<i>mo</i>)	8.7 (3-36)
Mean tear size	
Anterior-to-posterior dimension (range) (<i>cm</i>)	3.3 (1.5-5.5)
Medial-to-lateral dimension (range) (<i>cm</i>)	3.8 (3-4.6)