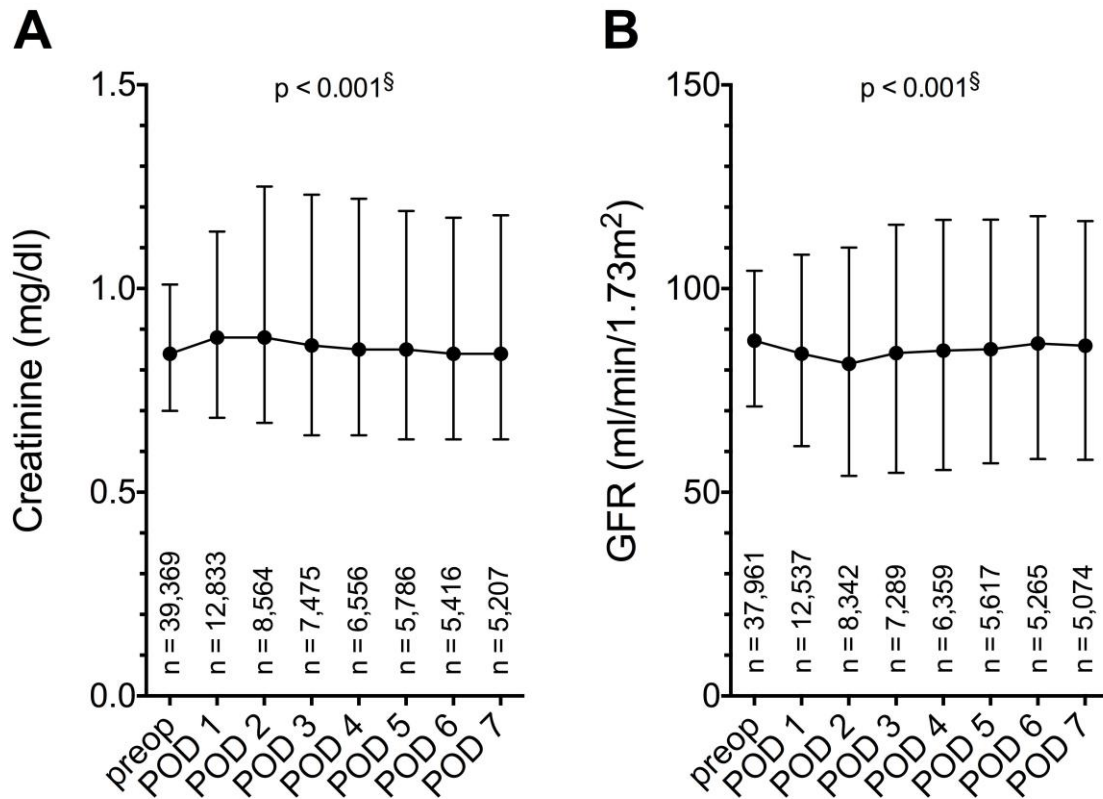


## Supplemental Digital Content 1



**(A)** Preoperative and postoperative creatinine concentration (multiply by 76.3 for  $\mu\text{mol/L}$ ) up to post-operative day (POD) 7 in surgical patients including number of measurements at corresponding points of time; median and quartiles; **(B)** Preoperative and postoperative glomerular filtration rate (GFR, estimated by the MDRD formula)<sup>1</sup> up to POD 7 in surgical patients including number of measurements at corresponding points of time; 1,408 patients aged under 16 were not included in this analysis; median and quartiles; <sup>\S</sup>non-parametric analysis of longitudinal data.<sup>2</sup>

### References:

1. Levey AS, Bosch JP, Lewis JB, Greene T, Rogers N, Roth D: A more accurate method to estimate glomerular filtration rate from serum creatinine: a new prediction equation. Modification of Diet in Renal Disease Study Group. *Ann Intern Med* 1999; 130: 461-70
2. Brunner E, Domhof S, Langer F: *Nonparametric Analysis of Longitudinal Data in Factorial Experiments*. New York, John Wiley & Sons, 2002